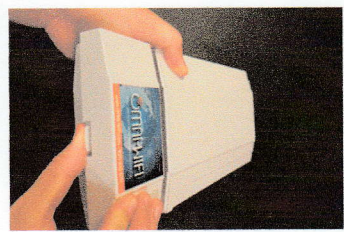


### Inventory:

-  1 SweetSpot™ access point
-  1 (short) Ethernet cable
-  1 Hose clamp
-  1 (long) Ethernet cable
-  1 Power cable
-  1 PoE Injector

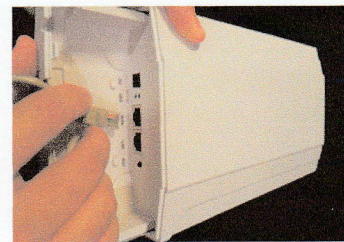
### STEP 1

Lift tab to remove base of SweetSpot10™.



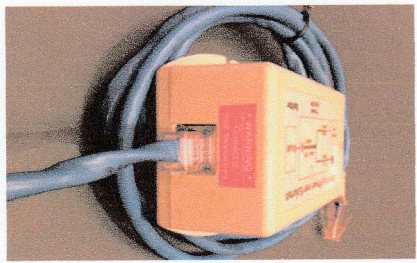
### STEP 2

Plug th end of the long Ethernet cable into the WAN port at the base of the SweetSpot10™.



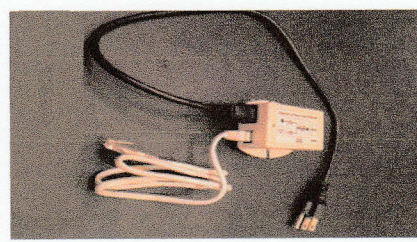
### STEP 3

Plug the other end of the long Ethernet cable into the PoE port on the PoE injector.



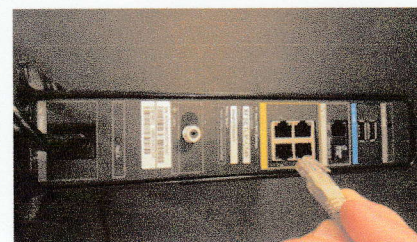
### STEP 4

Plug one end of the short Ethernet cable into the LAN port of the PoE injector.



### STEP 5

Plug the other end of the short Ethernet cable into an available port on your broadband modem.



**WARNING:** Do not connect the cable from the PoE port on the PoE injector into the broadband modem! Only connect the LAN port cable to the broadband modem.

**STEP 6**

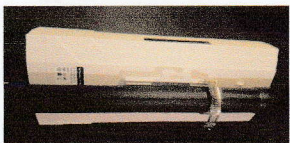
Place the SweetSpot10™ access point in a convenient location.



**NOTE:** See optional instructions on right for pole mounting the unit outdoors.

**STEP 7**

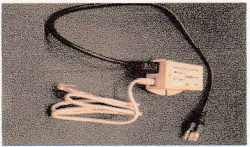
**OPTIONAL:** For pole mounting, use the hose clamp provided to fasten the access point to the pole. Position the access point at a height and angle so that it points at the majority of users with no obstacles to line-of-sight. Ensure that any outdoor electrical connections are weather resistant.



**NOTE:** Pole not supplied. Recommend wood or fiberglass pole.

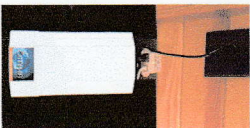
**STEP 8**

Plug the power cable into the POE injector.



**STEP 9**

Plug the other end of the power cable into 110 volts current.



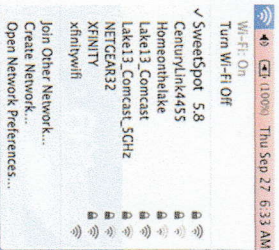
**STEP 10**

Wait 45 seconds for the SweetSpot10™ to self-test.



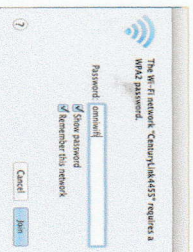
**STEP 11**

Connect your device to SSID "SweetSpot10 2.4" or "SweetSpot10 5.8".



**STEP 12**

On request for password, enter "omniwifi".



**STEP 13**

Enjoy your SweetSpot™ access point from OMNI-WIFI, LLC.

